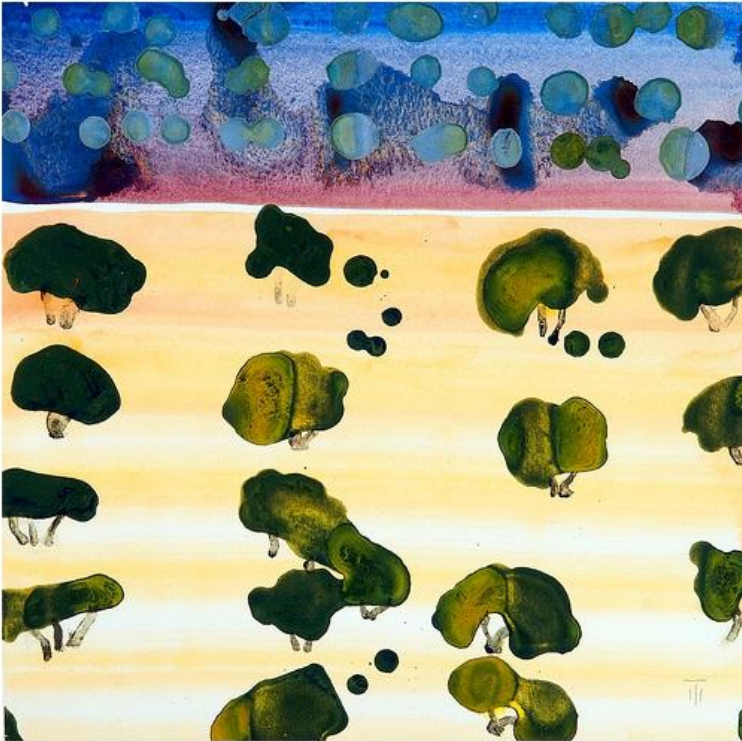


## Markings /4

May 2012

*A collaboration between artist Jamie Treadwell  
& writer Amin Kurani, for inspiration today.*



// Unity and diversity

One minute in the London underground the other day was enough to remind me just how little the world revolved around me. Greeted by the sight of a human sea pouring into the subway, I felt lost in a mighty crowd of others like myself.

Something akin to a rush is happening in the painting of the olive grove. Mound after mound, the trees in the sunbathed earth are lining up. As they line up, they merge into patterns. The pale yellow stripes reinforce the sense of the whole.

But I also see something besides the grove's pattern. It is obvious that every tree is in fact highly original, like the shape of the triad family in the middle, or the way some olives catch the light. Every one strikes a different pose for the artist. My mind skips back to the London underground - this time I'm inside the train, and unlike the previous rush, characters are coming into focus. There's a sleeping man with his eyes blissfully closed and mouth wide open. Over there an elderly couple is looking very stately, concert programs on their laps.

The olive landscape is a beautiful mixture of two perspectives: one highlights every tree's uniqueness, the other merges the trees into a large, orderly grove. Unity and diversity.

*\* "Yellow" by Jamie Treadwell is available as an original painting & limited-edition print. Visit [www.jamietreadwell.com](http://www.jamietreadwell.com) for the gallery and blog.*